

Instruction Manual

TEST CERTIFICATE

We certifies that this unit met its published specifications and that it passed the rigorous performance tests.

Tested by _____

Approved by _____



Before operating this set, please read these instructions carefully.

- POWER** WHEN THE POWER LED IS LIT, THE REGULATOR IS POWERED ON.
- DELAY** WHEN THE DELAY LED IS LIT, THE REGULATOR DOES NOT TRANSMIT POWER THE CONNECTED DEVICE. POWER WILL BE TRANSMITTED AFTER A DELAY OF 3-7 MINUTES TO PREVENT ELECTRICAL DAMAGE.
- PROTECTION** WHEN THE PROTECTION LED IS LIT, THE OUTPUT IS OVER 248+/-4V OR UNDER 184+/-4V



When the LED display shows "L" It means under voltage protection
 When the LED display shows "H" It means over voltage protection
 When the LED display shows "C" It means over-heating protection

SPECIFICATIONS

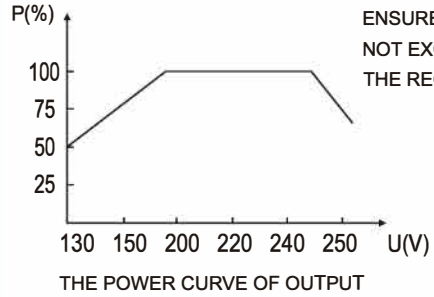
MODEL	INPUT		OUTPUT			FUSE	
	Voltage	Freq	Voltage	Freq	Power	Maximum Current	Rating
ETS-500VA	130-250V	50Hz / 60Hz	220V	50Hz / 60Hz	400W	2.3A	FUSE 8A
ETS-1000VA					800W	4.5A	FUSE 10A
ETS-1500VA					1200W	9.0A	FUSE 10A
ETS-2000VA					1600W	9.0A	FUSE 15A
ETS-3000VA					2400W	13.6A	MCB 16A
ETS-4000VA					3600W	18.2A	MCB 20A
ETS-5.5KVA					4000W	22.7A	MCB 25A
ETS-7.5KVA					6000W	34.1A	MCB 32A
ETS-10KVA					8000W	45.4A	MCB 40A

All models are single phase.
 Action/transfer time is less than 0.5 second.
 With no distortion.

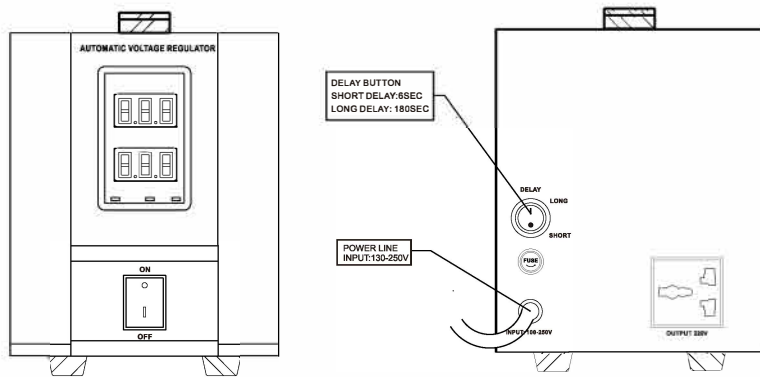
CAUTION:

- Avoid overloading
Do not use the regulator beyond its maximum power.
- When connected to any compressor run appliance, the start up power (Transient Power) is usually several times the appliance listed power rating. Ensure that the total starting power of all appliances connected does not exceed the listed maximum out power of the regulator.
- Make sure that the regulator is of the same output voltage and frequency as the appliance's connected.
- Make sure that the voltage of electrical source is within the listed range of the input voltage of the regulator.
- Always place the regulator in an environment that is:
 - well ventilated.
 - not exposed to direct sunlight or heat source.
 - out of reach from children.
 - away from water moisture oil or grease.
 - away from any flammable substance.

IF THE INPUT VOLTAGE IS IN THE RANGE OF 130-250V
 THE REGULATOR IS ABLE TO PROVIDE THE 100% LISTED
 MAXIMUM OUTPUT POWER
 IF THE INPUT VOLTAGE IS BELOW 100V,THE REGULATOR'S
 MAXIMUM OUTPUT POWER WILL CHANGE AS THE CURVE
 SHOWN BELOW.

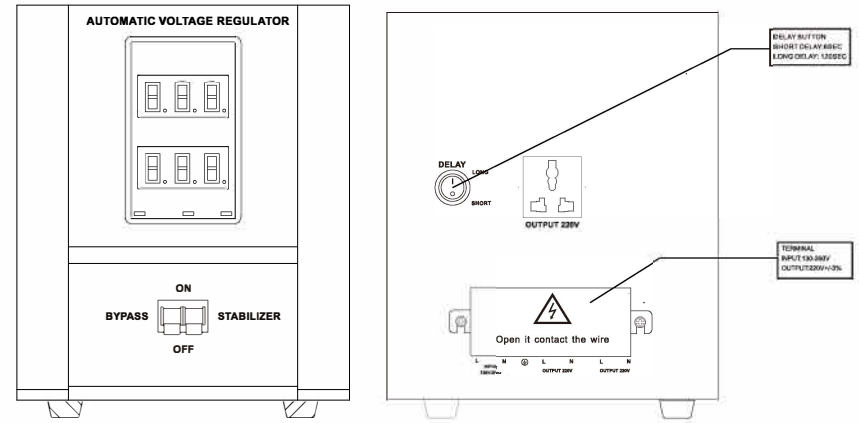


ENSURE TOTAL LOAD CONNECTED DOES
 NOT EXCEED THE RATED POWER FOR
 THE REGULATOR.

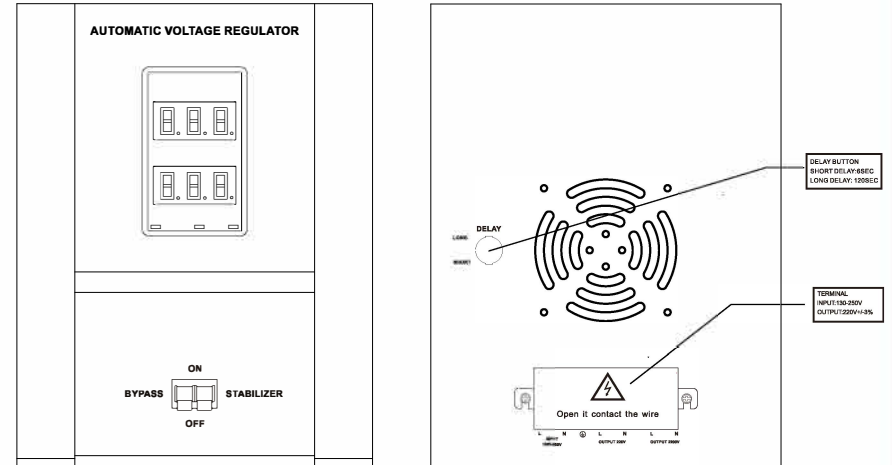


ETS-1000VA&2000VA

(BE SURE TO CONNECT THE GROUND POINT TO THE GROUND FOR YOUR SAFE)



ETS-3000VA&4000VA



ETS-5.5KVA | 7.5KVA | 10KVA